

CROP CONDITION & DEVELOPMENT STAGES

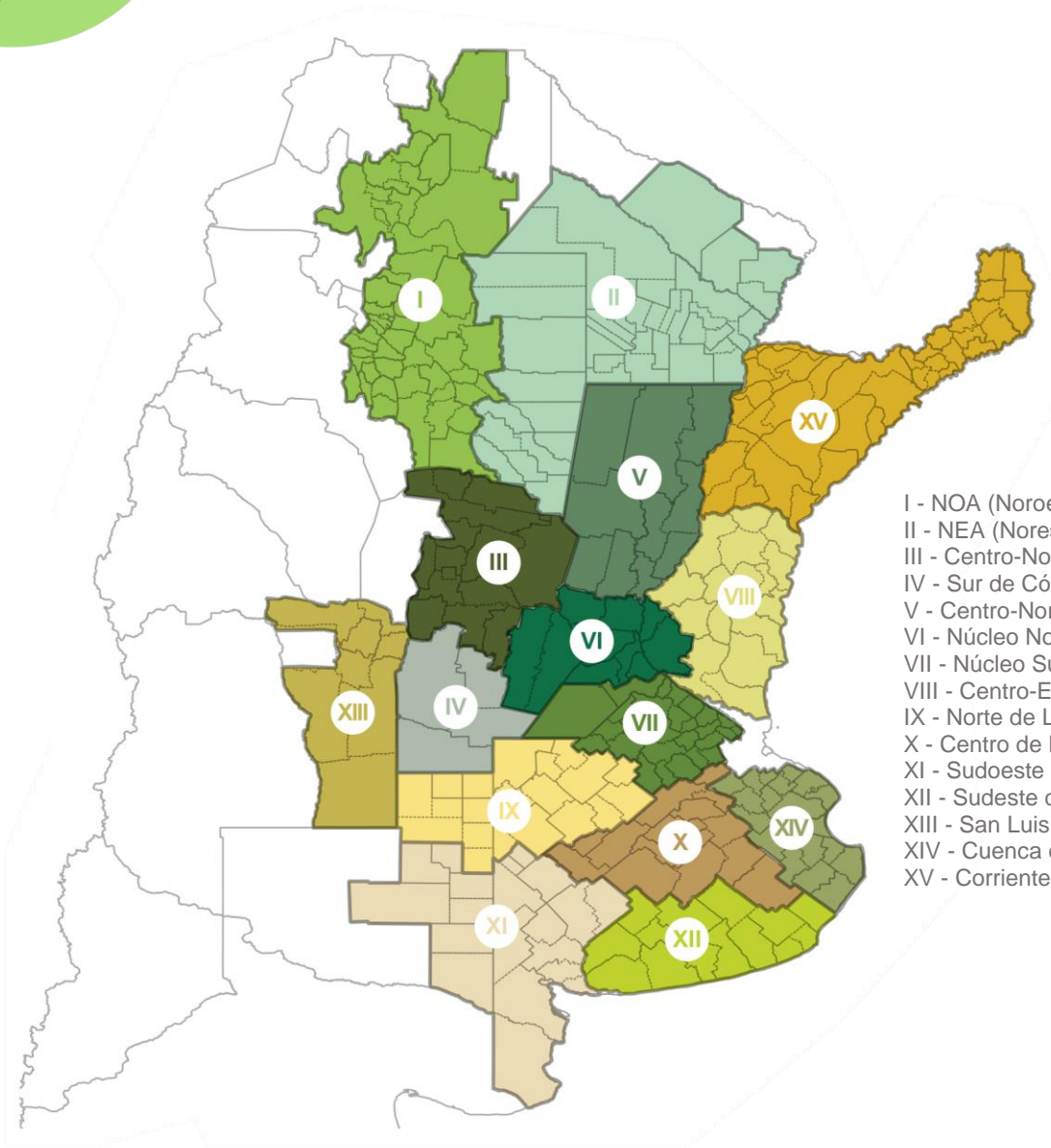
SEPTEMBER, 6
2018



BUENOS AIRES GRAIN EXCHANGE
DEPARTMENT OF AGRICULTURAL
ESTIMATES

ISSN 2591-4715

DEPARTMENT & REGIONS



- I - NOA (Noroeste Argentino)
- II - NEA (Noreste Argentino)
- III - Centro-Norte de Córdoba
- IV - Sur de Córdoba
- V - Centro-Norte de Santa Fe
- VI - Núcleo Norte
- VII - Núcleo Sur
- VIII - Centro-Este de Entre Ríos
- IX - Norte de La Pampa - Oeste de Buenos Aires
- X - Centro de Buenos Aires
- XI - Sudoeste de Buenos Aires - Sur de La Pampa
- XII - Sudeste de Buenos Aires
- XIII - San Luis
- XIV - Cuenca del Salado
- XV - Corrientes - Misiones

HEAD OF DEPARTMENT

Esteban J Copati
ecopati@bc.org.ar

CROP ANALYST

Martin López
martinlopez@bc.org.ar

COORDINATOR

Gonzalo Hermida
ghermida@bc.org.ar

SATELLITE IMAGE ANALYST

María Victoria Corte
mcorte@bc.org.ar

CROP CONDITION ANALYST

Daniela A. Venturino
dventurino@bc.org.ar
Wheat & Sunflower

Santiago Burrone
sburrone@bc.org.ar
Corn

Ayelén Gago
amgago@bc.org.ar
Soybean

CONTACT

123 Corrientes Avenue
C1043AAB - CABA
Phone: +54 11 4515 8200 | 8300
estimacionesagricolas@bc.org.ar
Twitter: @estimacionesbc

ISSN 2591-4715

CROP CONDITION & DEVELOPMENT STAGES

Findings of the survey conducted through September 6, 2018. The areas under analysis in this report account for 90% of the crops planted area. The regional development data is published once planting is complete. The national planting and harvest progress, as well as the phenological data of the crops derive from the final area projection, while the moisture and crop condition derive from the planting progress to date.

Sunflower

Season 2018/2019

Sunflower Planted: as of September 5, 2018

Regions	September 6, 2017 %	August 29, 2018 %	September 5, 2018 %	2013/2018 Average %
I NOA	-	-	-	-
II NEA	96,0	95,0	100,0	77,8
III Ctro N Cba	25,0	12,0	21,0	13,0
IV S Cba	-	-	3,0	-
V Ctro N SFe	75,0	45,0	71,0	59,4
VI Núcleo Norte	12,0	10,0	18,0	7,4
VII Núcleo Sur	-	-	-	-
VIII Ctro E ER	6,0	1,0	7,0	1,8
IX N LP-OBA	-	-	-	-
X Ctro Bs As	-	-	-	-
XI SO BA-S LP	-	-	-	-
XII SE BA	-	-	-	-
XIII San Luis	-	-	-	-
XIV Cuenca Sal	-	-	-	-
XV Others	10,0	2,0	12,0	4,0
National	31,3	28,7	33,9	21,4

Sunflower Condition: as of September 5, 2018

Regions	Very Poor %	Poor %	Fair %	Good %	Excellent %
I NOA	-	-	-	-	-
II NEA	4,0	16,0	45,0	33,0	2,0
III Ctro N Cba	-	-	-	-	-
IV S Cba	-	-	-	-	-
V Ctro N SFe	-	-	44,0	50,0	6,0
VI Núcleo Norte	-	-	-	-	-
VII Núcleo Sur	-	-	-	-	-
VIII Ctro E ER	-	-	-	-	-
IX N LP-OBA	-	-	-	-	-
X Ctro Bs As	-	-	-	-	-
XI SO BA-S LP	-	-	-	-	-
XII SE BA	-	-	-	-	-
XIII San Luis	-	-	-	-	-
XIV Cuenca Sal	-	-	-	-	-
XV Others	-	-	-	-	-
National	2,7	11,1	44,7	38,3	3,2
Nat.Sep. 6, 2017	-	15,4	20,0	64,6	-

CROP CONDITION & DEVELOPMENT STAGES

Sunflower Moisture Condition: as of September 5, 2018

Regions	Dry %	Poor %	Favourable %	Optimum %	Wet %
I NOA	-	-	-	-	-
II NEA	22,0	42,0	36,0	-	-
III Ctro N Cba	-	-	-	-	-
IV S Cba	-	-	-	-	-
V Ctro N SFe	-	4,0	64,0	32,0	-
VI Núcleo Norte	-	-	-	-	-
VII Núcleo Sur	-	-	-	-	-
VIII Ctro E ER	-	-	-	-	-
IX N LP-OBA	-	-	-	-	-
X Ctro Bs As	-	-	-	-	-
XI SO BA-S LP	-	-	-	-	-
XII SE BA	-	-	-	-	-
XIII San Luis	-	-	-	-	-
XIV Cuenca Sal	-	-	-	-	-
XV Others	-	-	-	-	-
National	15,1	30,2	44,7	10,1	-
Nat.Sep. 6, 2017	-	21,3	71,4	7,3	-

Sunflower Leaf Development: as of September 5, 2018

Regions	September 6, 2017 %	August 29, 2018 %	September 5, 2018 %	2013/2018 Average %
I NOA	-	-	-	-
II NEA	63,0	42,0	55,0	53,3
III Ctro N Cba	-	-	-	-
IV S Cba	-	-	-	-
V Ctro N SFe	25,0	8,0	17,0	21,5
VI Núcleo Norte	-	-	-	-
VII Núcleo Sur	-	-	-	-
VIII Ctro E ER	-	-	-	-
IX N LP-OBA	-	-	-	-
X Ctro Bs As	-	-	-	-
XI SO BA-S LP	-	-	-	-
XII SE BA	-	-	-	-
XIII San Luis	-	-	-	-
XIV Cuenca Sal	-	-	-	-
XV Others	-	-	-	-
National	17,5	10,9	15,2	12,2

CROP CONDITION & DEVELOPMENT STAGES

Wheat

Wheat Condition: as of September 5, 2018

Regions		Very Poor %	Poor %	Fair %	Good %	Excellent %
I	NOA	19,0	44,0	31,0	6,0	-
II	NEA	-	23,0	59,0	18,0	-
III	Ctro N Cba	5,0	20,0	58,0	17,0	-
IV	S Cba	5,0	19,0	47,0	22,0	7,0
V	Ctro N SFe	-	3,0	39,0	43,0	15,0
VI	Núcleo Norte	-	13,0	46,0	29,0	12,0
VII	Núcleo Sur	-	7,0	26,0	55,0	12,0
VIII	Ctro E ER	-	-	-	-	-
IX	N LP-OBA	7,0	12,0	19,0	49,0	13,0
X	Ctro Bs As	-	11,0	40,0	31,0	18,0
XI	SO BA-S LP	-	10,0	25,0	53,0	12,0
XII	SE BA	-	2,0	19,0	57,0	22,0
XIII	San Luis	-	-	-	-	-
XIV	Cuenca Sal	-	-	-	-	-
XV	Others	-	-	-	-	-
National		2,6	13,3	36,6	37,7	9,7
Nat.Sep. 6, 2017		1,1	5,7	22,9	61,6	8,7

Wheat Moisture Condition: as of September 5, 2018

Regions		Dry %	Poor %	Favourable %	Optimum %	Wet %
I	NOA	48,0	52,0	-	-	-
II	NEA	30,0	31,0	39,0	-	-
III	Ctro N Cba	16,0	65,0	19,0	-	-
IV	S Cba	22,0	51,0	24,0	3,0	-
V	Ctro N SFe	-	13,0	61,0	26,0	-
VI	Núcleo Norte	-	34,0	51,0	15,0	-
VII	Núcleo Sur	-	21,0	35,0	40,0	4,0
VIII	Ctro E ER	-	-	-	-	-
IX	N LP-OBA	1,0	36,0	48,0	15,0	-
X	Ctro Bs As	-	19,0	54,0	23,0	4,0
XI	SO BA-S LP	10,0	44,0	35,0	11,0	-
XII	SE BA	7,0	11,0	56,0	26,0	-
XIII	San Luis	-	-	-	-	-
XIV	Cuenca Sal	-	-	-	-	-
XV	Others	-	-	-	-	-
National		10,1	32,4	39,0	16,9	1,6
Nat.Sep. 6, 2017		1,7	25,9	18,5	17,8	36,0

CROP CONDITION & DEVELOPMENT STAGES

Wheat Tillering: as of September 5, 2018

Regions		September 6, 2017 %	August 29, 2018 %	September 5, 2018 %	2013/2018 Average %
I	NOA	100,0	100,0	100,0	100,0
II	NEA	100,0	100,0	100,0	99,2
III	Ctro N Cba	100,0	98,0	100,0	100,0
IV	S Cba	100,0	81,0	95,0	96,2
V	Ctro N SFe	97,0	100,0	100,0	95,2
VI	Núcleo Norte	100,0	100,0	100,0	93,6
VII	Núcleo Sur	90,0	75,0	89,0	88,8
VIII	Ctro E ER	-	-	-	-
IX	N LP-OBA	78,0	72,0	84,0	72,4
X	Ctro Bs As	85,0	78,0	81,0	84,8
XI	SO BA-S LP	54,0	62,0	74,0	74,8
XII	SE BA	51,0	70,0	81,0	61,6
XIII	San Luis	-	-	-	-
XIV	Cuenca Sal	-	-	-	-
XV	Others	-	-	-	-
National		85,5	86,0	92,3	85,8

Wheat Steam Extension: as of September 5, 2018

Regions		September 6, 2017 %	August 29, 2018 %	September 5, 2018 %	2013/2018 Average %
I	NOA	92,0	82,0	96,0	89,6
II	NEA	71,0	63,0	77,0	79,8
III	Ctro N Cba	39,0	40,0	54,0	64,4
IV	S Cba	42,0	39,0	52,0	45,0
V	Ctro N SFe	62,0	38,0	47,0	60,6
VI	Núcleo Norte	66,0	40,0	48,0	46,4
VII	Núcleo Sur	58,0	19,0	30,0	34,0
VIII	Ctro E ER	-	-	-	-
IX	N LP-OBA	27,0	-	9,0	25,0
X	Ctro Bs As	8,0	-	7,0	16,0
XI	SO BA-S LP	6,0	-	3,0	16,6
XII	SE BA	7,0	-	9,0	13,6
XIII	San Luis	-	-	-	-
XIV	Cuenca Sal	-	-	-	-
XV	Others	-	-	-	-
National		43,1	29,4	39,4	40,5

CROP CONDITION & DEVELOPMENT STAGES

Wheat Heading: as of September 5, 2018

Regions		September 6, 2017 %	August 29, 2018 %	September 5, 2018 %	2013/2018 Average %
I	NOA	69,0	41,0	53,0	43,4
II	NEA	46,0	17,0	30,0	36,8
III	Ctro N Cba	2,0	-	7,0	6,0
IV	S Cba	1,0	-	5,0	5,0
V	Ctro N SFe	23,0	-	2,0	19,2
VI	Núcleo Norte	15,0	15,0	23,0	8,2
VII	Núcleo Sur	-	-	-	2,6
VIII	Ctro E ER	-	-	-	-
IX	N LP-OBA	-	-	-	1,6
X	Ctro Bs As	-	-	-	1,0
XI	SO BA-S LP	-	-	-	0,6
XII	SE BA	-	-	-	0,8
XIII	San Luis	-	-	-	-
XIV	Cuenca Sal	-	-	-	-
XV	Others	-	-	-	-
National		11,2	6,0	10,2	8,0

Season 2017/2018

Early Corn

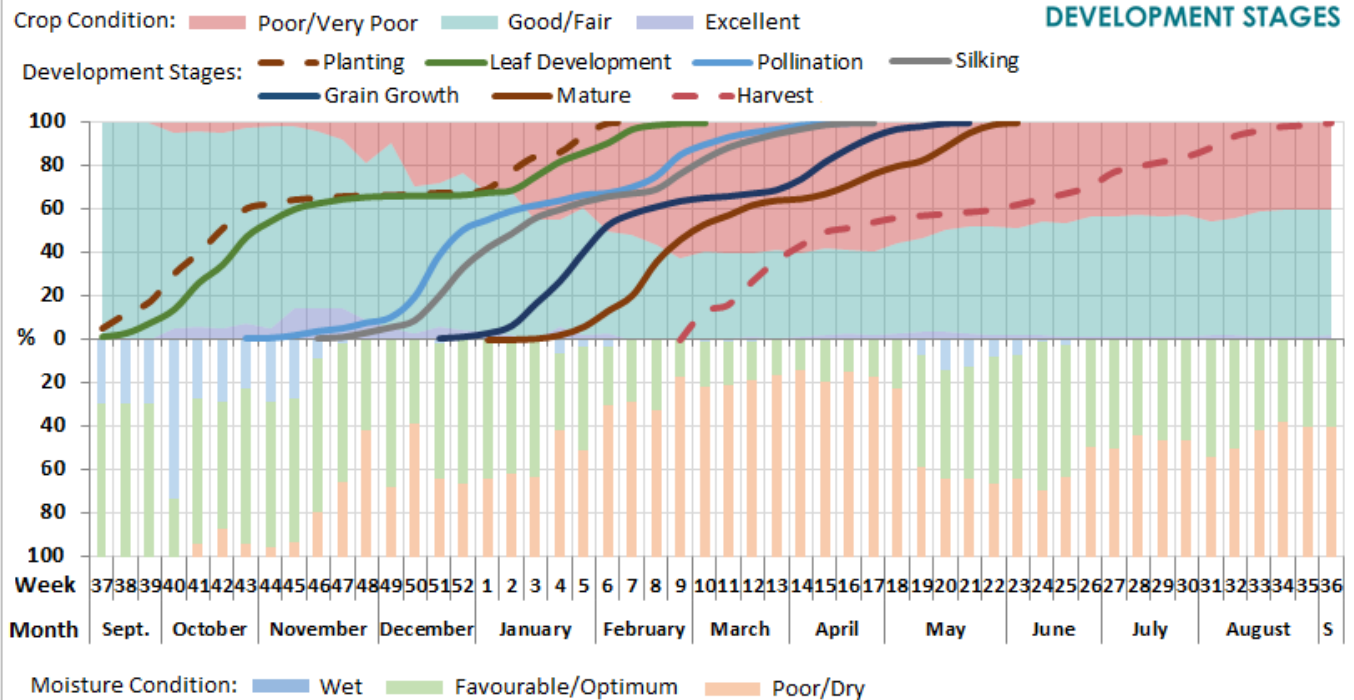
Early Corn Harvested: as of September 5, 2018

Regions		September 6, 2017 %	August 29, 2018 %	September 5, 2018 %	2012/2017 Average %
I	NOA	100,0	96,0	100,0	98,7
II	NEA	100,0	97,0	100,0	99,2
III	Ctro N Cba	100,0	100,0	100,0	100,0
IV	S Cba	100,0	100,0	100,0	100,0
V	Ctro N SFe	100,0	100,0	100,0	100,0
VI	Núcleo Norte	100,0	100,0	100,0	100,0
VII	Núcleo Sur	100,0	100,0	100,0	100,0
VIII	Ctro E ER	100,0	100,0	100,0	100,0
IX	N LP-OBA	100,0	100,0	100,0	100,0
X	Ctro Bs As	100,0	100,0	100,0	100,0
XI	SO BA-S LP	100,0	100,0	100,0	100,0
XII	SE BA	100,0	100,0	100,0	99,8
XIII	San Luis	100,0	100,0	100,0	100,0
XIV	Cuenca Sal	100,0	100,0	100,0	100,0
XV	Others	100,0	100,0	100,0	100,0
National		100,0	98,9	100,0	99,7

CROP CONDITION & DEVELOPMENT STAGES

Early Corn 2017/18 Development in Argentina

CROP CONDITION & DEVELOPMENT STAGES



Source: Department of Agricultural Estimates - Buenos Aires Grain Exchange

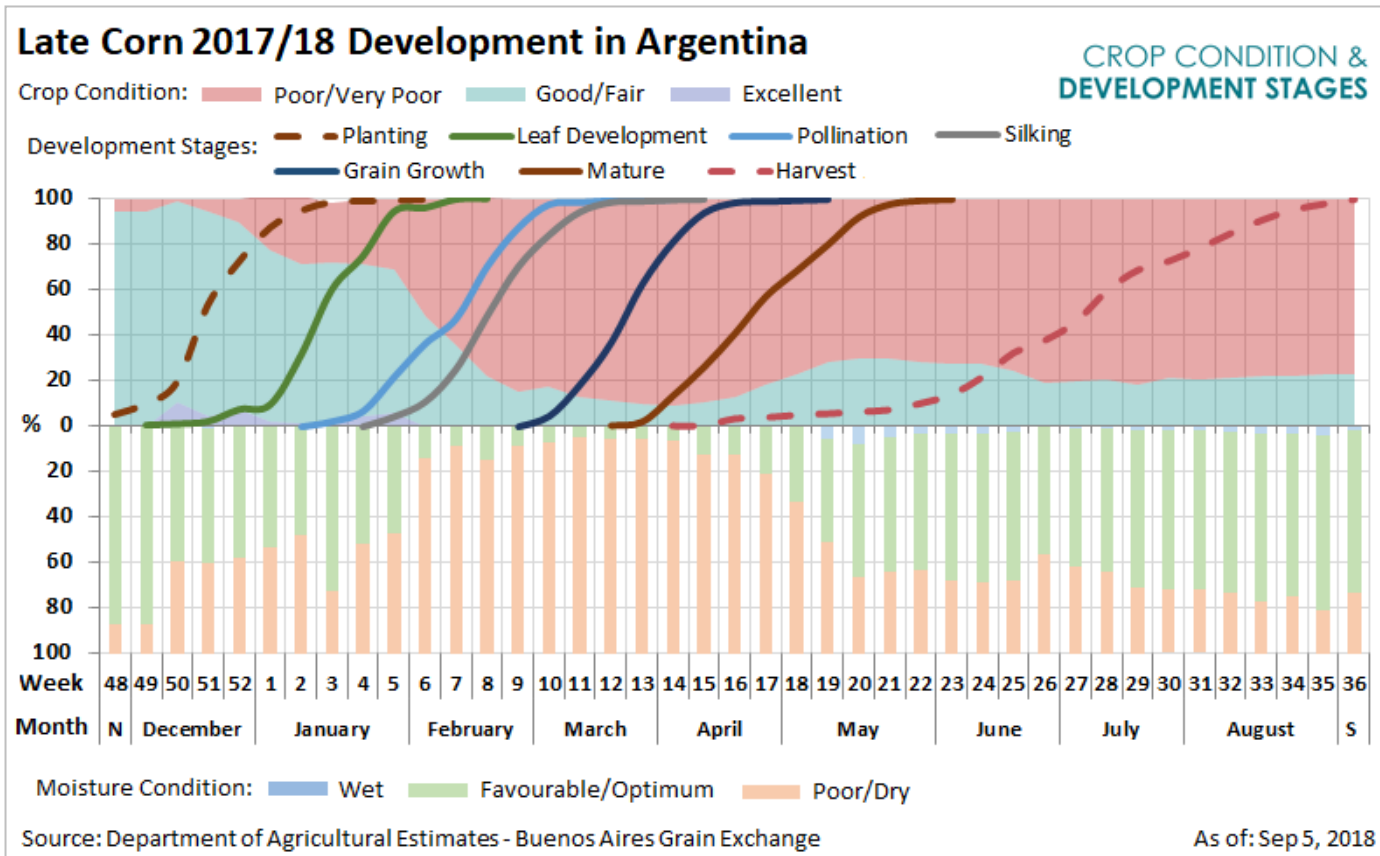
As of: Sep 5, 2018

Late Corn

Late Corn Harvested: as of September 5, 2018

Regions	September 6, 2017 %	August 29, 2018 %	September 5, 2018 %	2012/2017 Average %
I NOA	-	-	-	-
II NEA	-	-	-	-
III Ctro N Cba	95,0	100,0	100,0	97,8
IV S Cba	94,0	97,0	100,0	96,6
V Ctro N SFe	100,0	100,0	100,0	99,6
VI Núcleo Norte	100,0	100,0	100,0	100,0
VII Núcleo Sur	100,0	100,0	100,0	100,0
VIII Ctro E ER	100,0	100,0	100,0	100,0
IX N LP-OBA	90,0	95,0	100,0	97,0
X Ctro Bs As	90,0	98,0	100,0	97,2
XI SO BA-S LP	60,0	92,0	100,0	86,2
XII SE BA	60,0	90,0	100,0	87,0
XIII San Luis	95,0	100,0	100,0	98,0
XIV Cuenca Sal	100,0	96,0	100,0	99,6
XV Others	100,0	100,0	100,0	100,0
National	93,2	98,0	100,0	97,5

CROP CONDITION & DEVELOPMENT STAGES



Corn

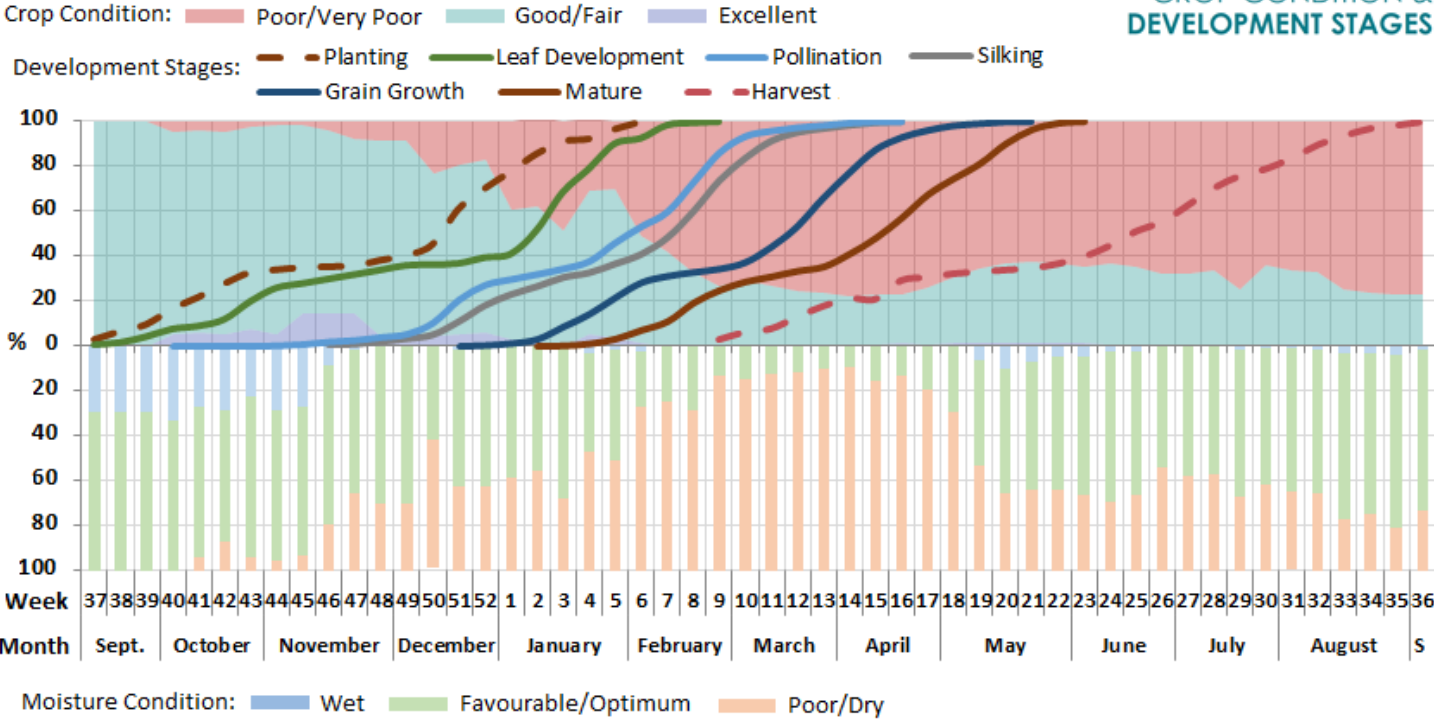
Corn Harvested: as of September 5, 2018

Regions	September 6, 2017 %	August 29, 2018 %	September 5, 2018 %	2012/2017 Average %
I NOA	100,0	96,0	100,0	98,7
II NEA	100,0	97,0	100,0	99,2
III Ctro N Cba	95,8	100,0	100,0	98,3
IV S Cba	95,8	97,6	100,0	98,3
V Ctro N SFe	100,0	100,0	100,0	99,8
VI Núcleo Norte	100,0	100,0	100,0	100,0
VII Núcleo Sur	100,0	100,0	100,0	99,9
VIII Ctro E ER	100,0	100,0	100,0	100,0
IX N LP-OBA	94,0	97,5	100,0	98,4
X Ctro Bs As	95,0	98,8	100,0	98,8
XI SO BA-S LP	86,0	96,8	100,0	96,3
XII SE BA	92,0	96,0	100,0	97,3
XIII San Luis	96,0	100,0	100,0	99,2
XIV Cuenca Sal	100,0	97,6	100,0	99,9
XV Others	100,0	100,0	100,0	100,0
National	97,0	98,5	100,0	98,9

CROP CONDITION & DEVELOPMENT STAGES

Corn 2017/18 Development in Argentina

CROP CONDITION & DEVELOPMENT STAGES



Source: Department of Agricultural Estimates - Buenos Aires Grain Exchange

As of: Sep 5, 2018